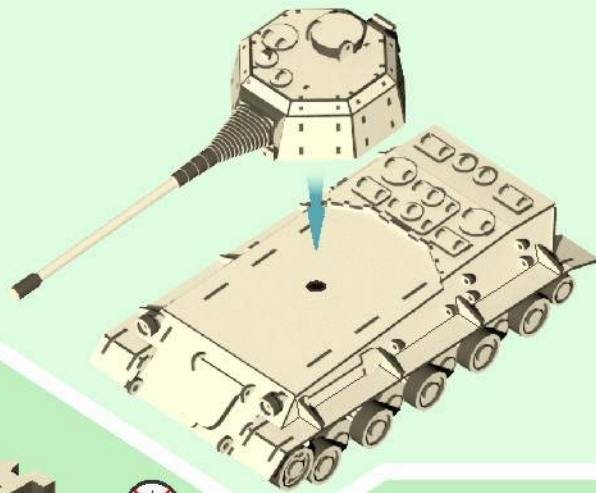
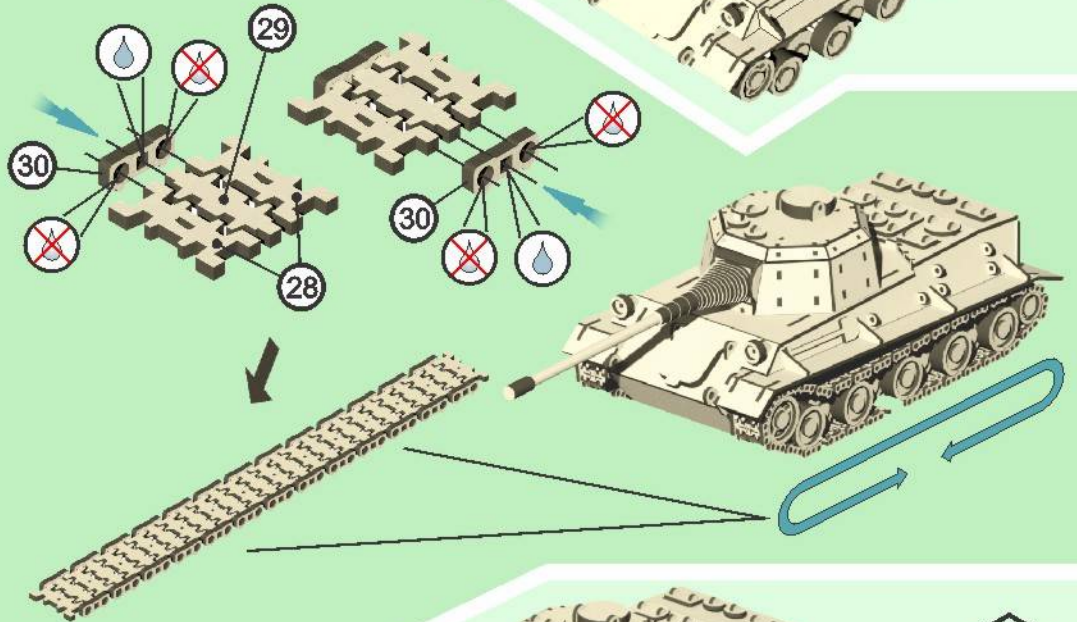


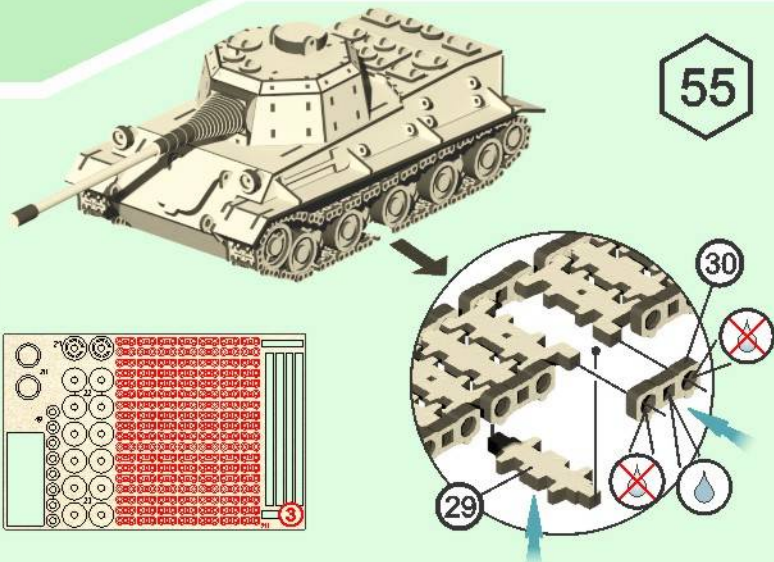
53



54



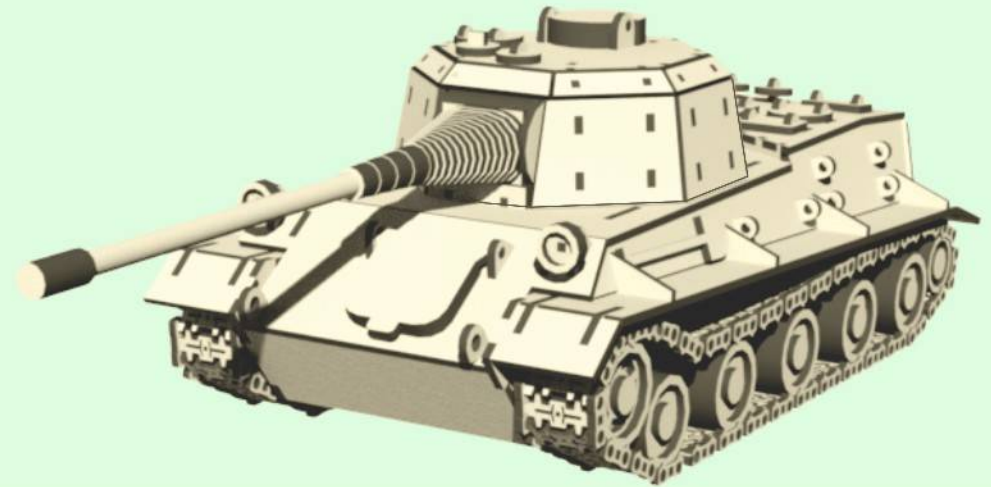
55



Инструкция по сборке модели "Lowe".

Assembly instruction for model "Lowe"
Le istruzioni per il montaggio del modello "Lowe"

Для сборки необходимо использовать
любой клей для дерева/
For the assembly you can use any wood glue/
Per il montaggio si deve utilizzare qualsiasi colla per legno



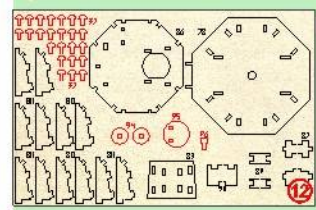
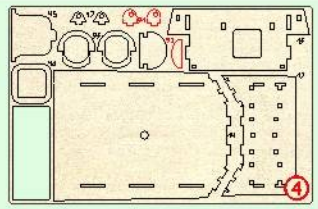
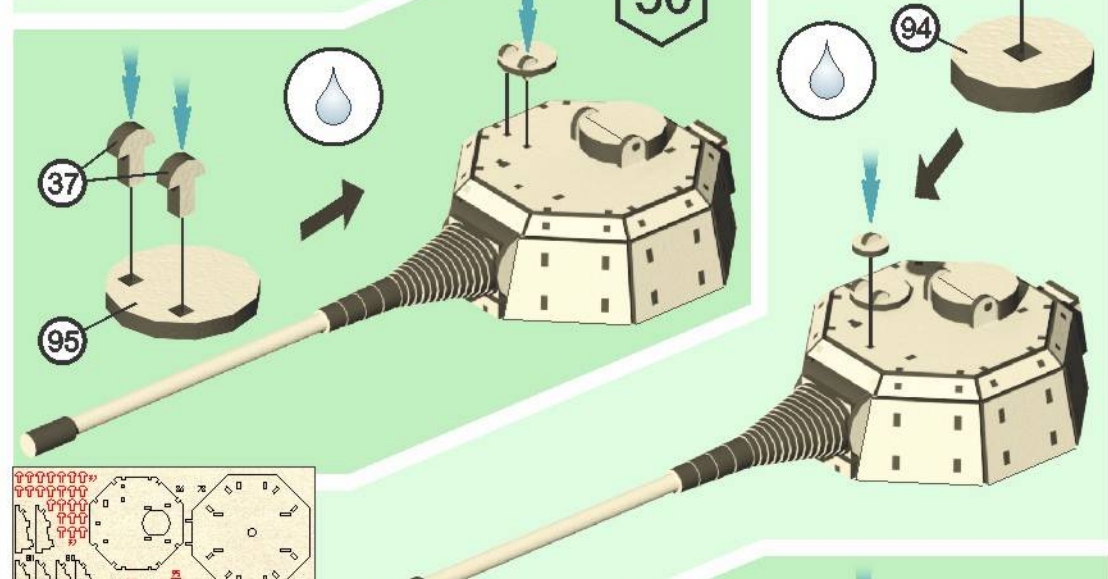
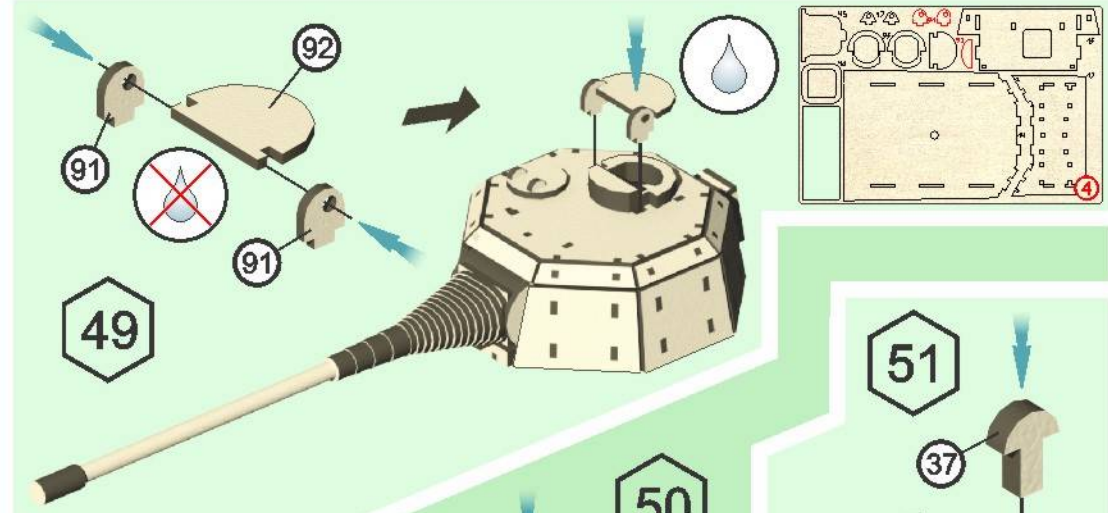
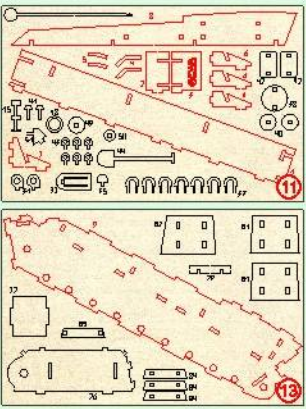
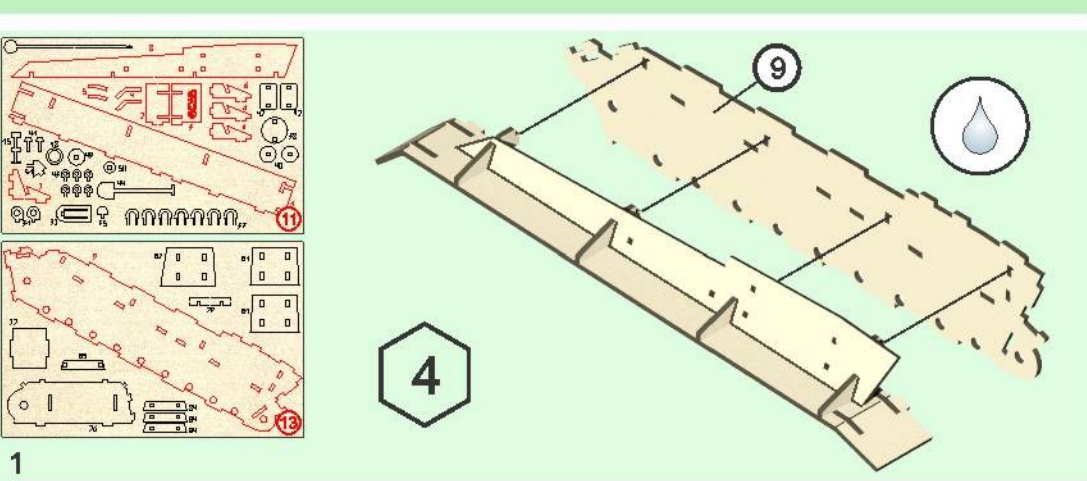
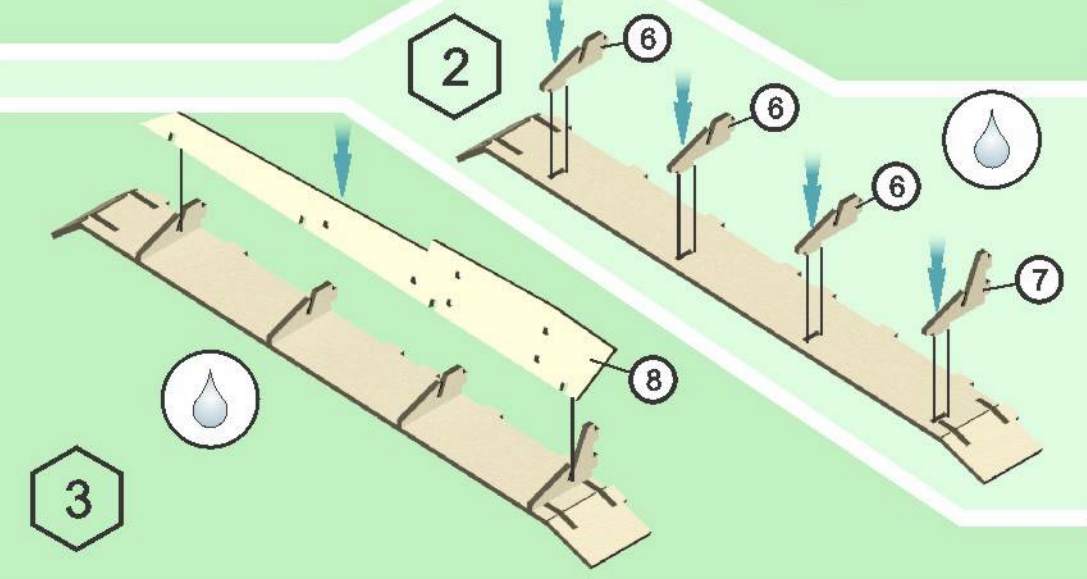
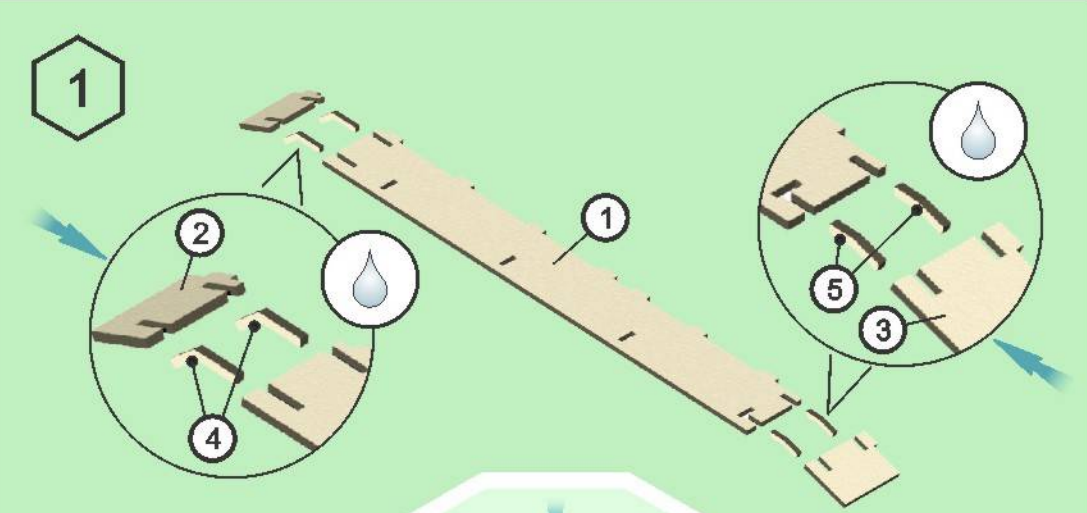
Использовать клей/ use glue/ usare colla

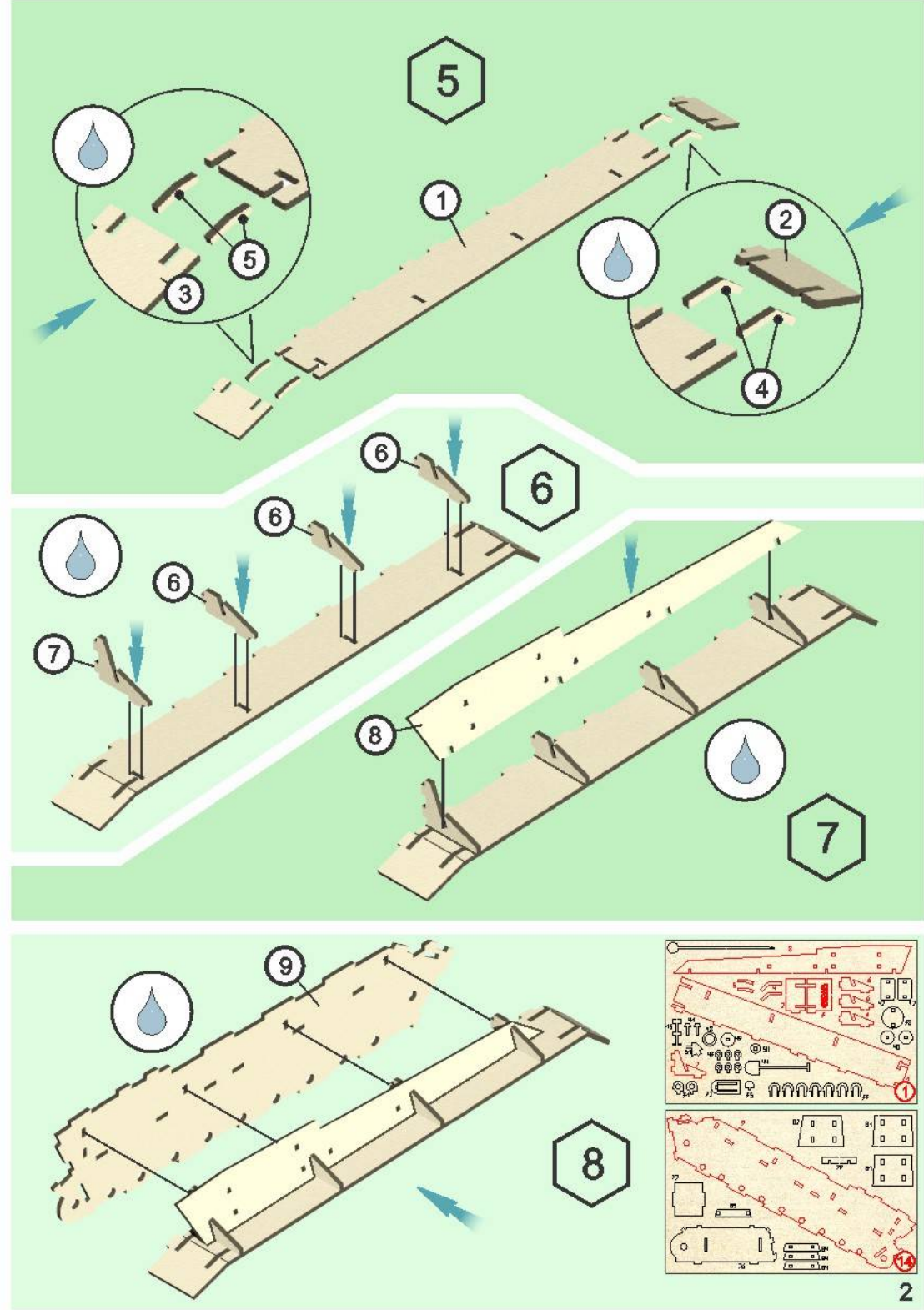
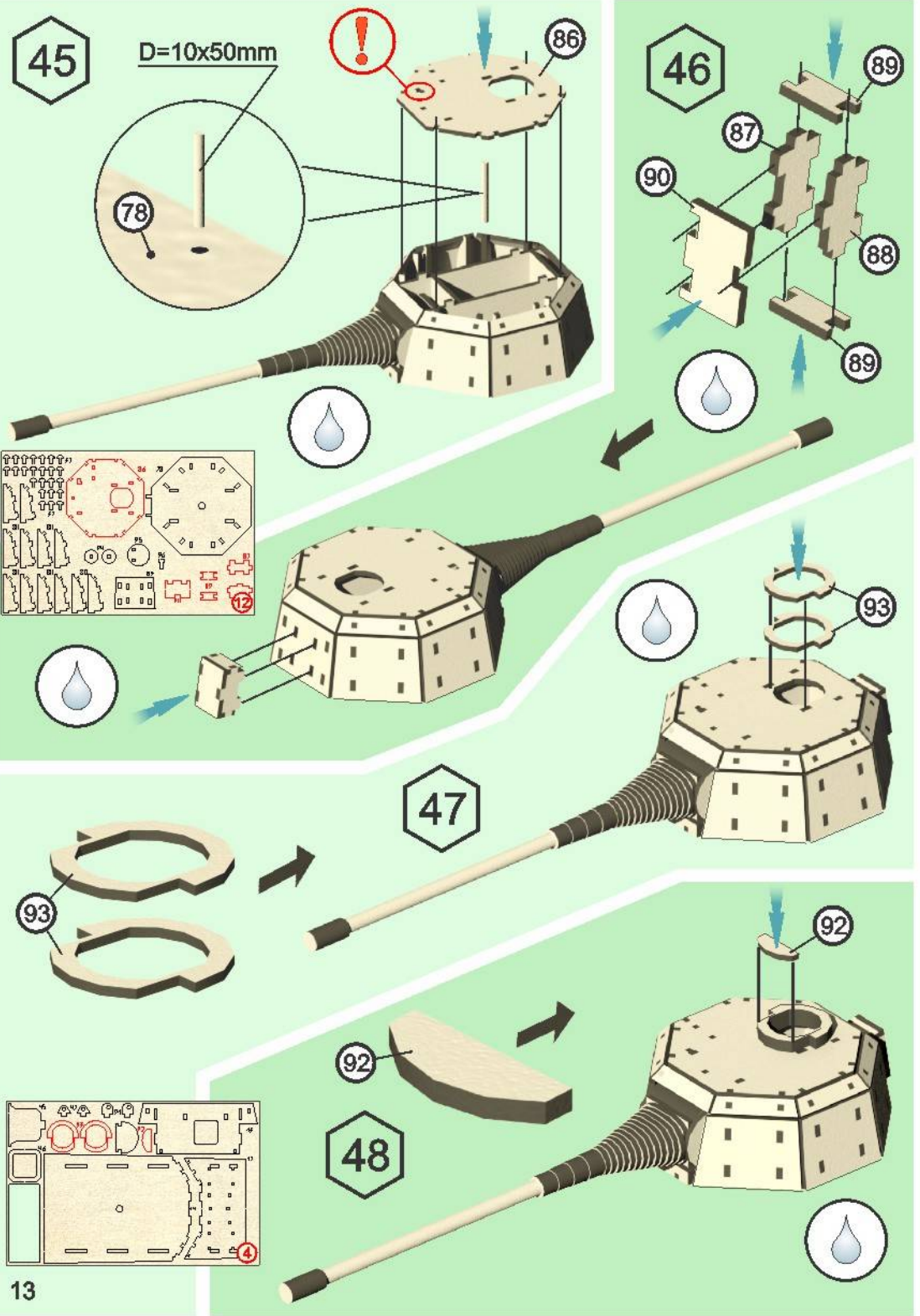


Не использовать клей/ do not use glue/ non usare colla

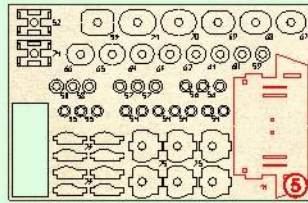
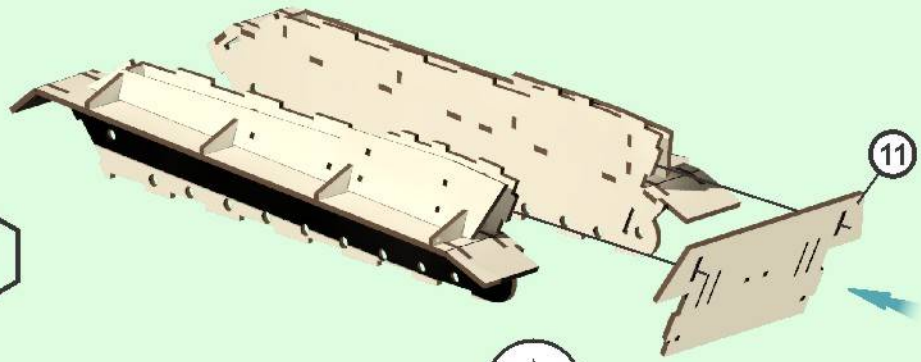


Древесина подвержена воздействию влаги. Для лучшего соединения/входа деталей
использовать свечку, канцелярский нож, наждачную бумагу или подсушить изделие!
Wood exposed to moisture. For the best connection/login details to use a candle,
a box cutter, sandpaper, or dry the product!
Il legno è esposto ad umidità. Per una migliore connessione/Inserimento dei dettagli
si deve utilizzare candela, coltello di cancelleria, carta abrasiva o far asciugare il prodotto

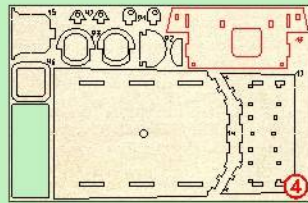
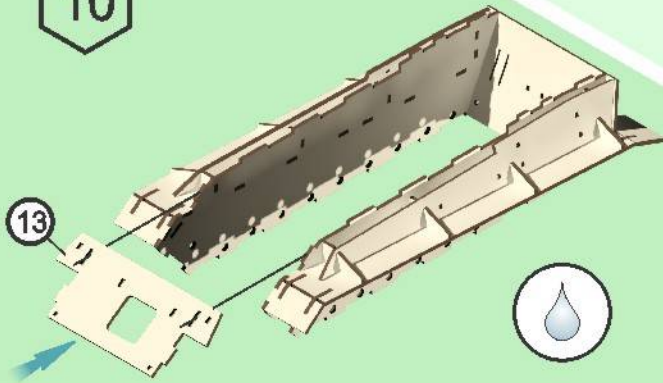




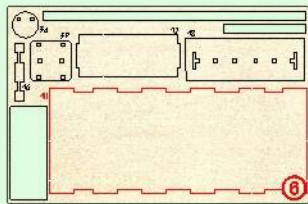
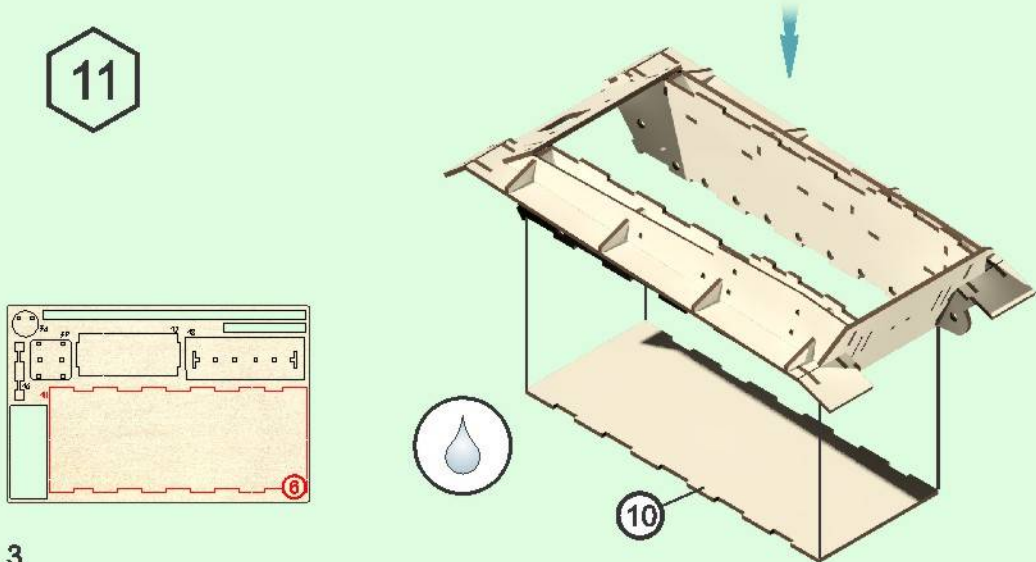
9



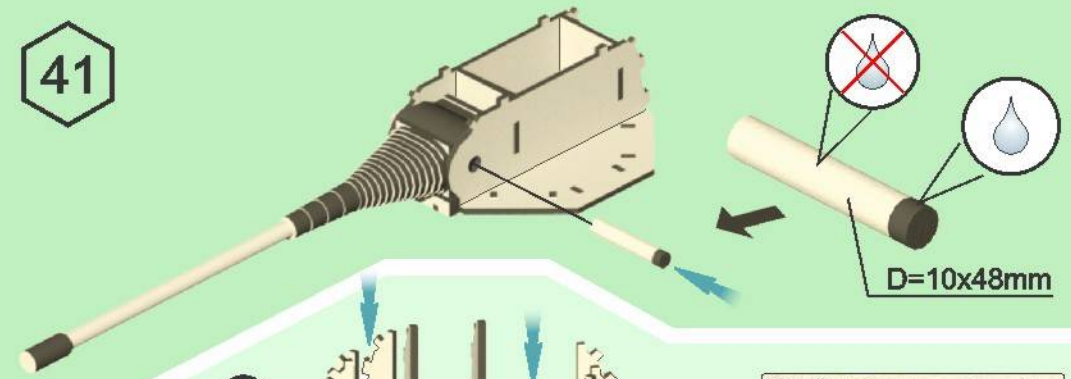
10



11

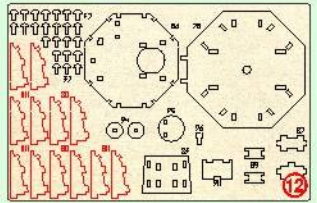
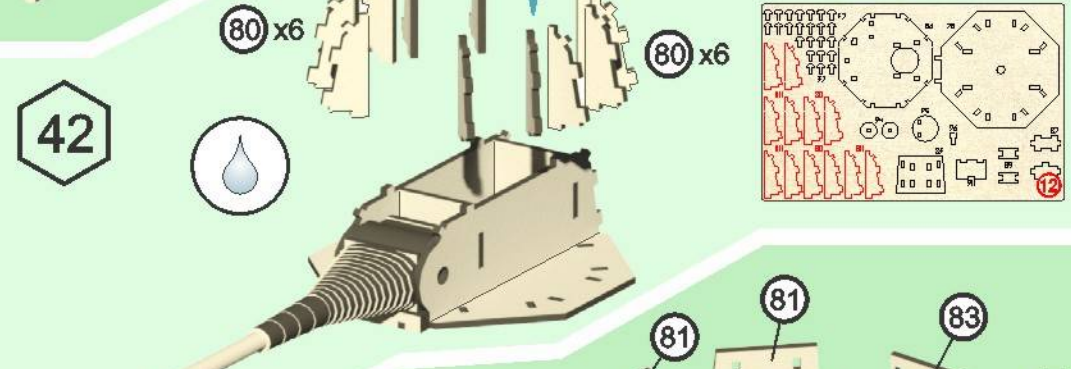


41

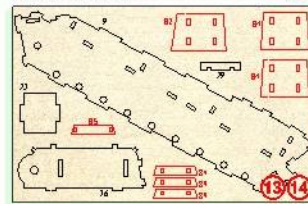
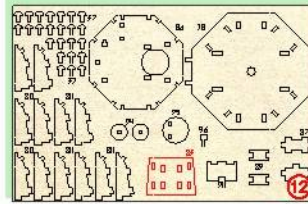


D=10x48mm

42

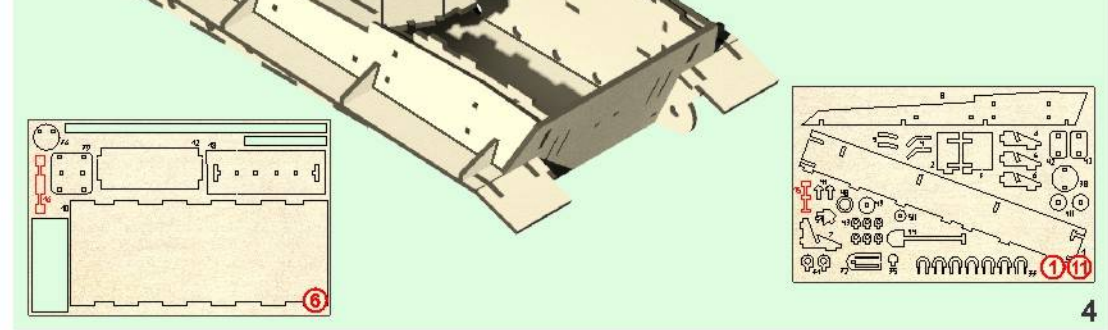
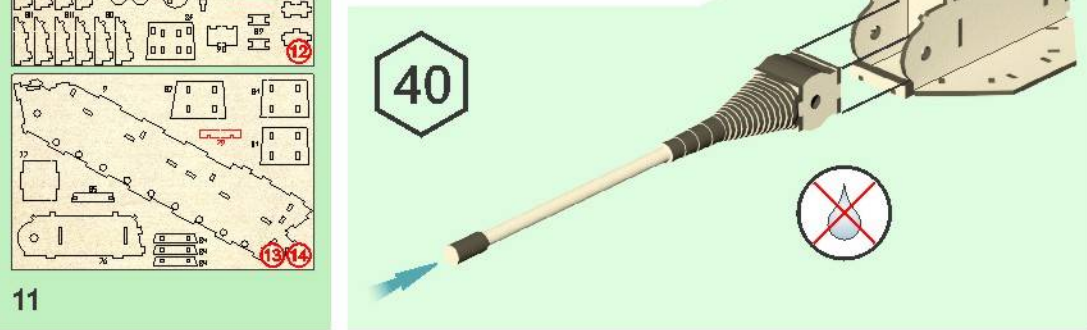
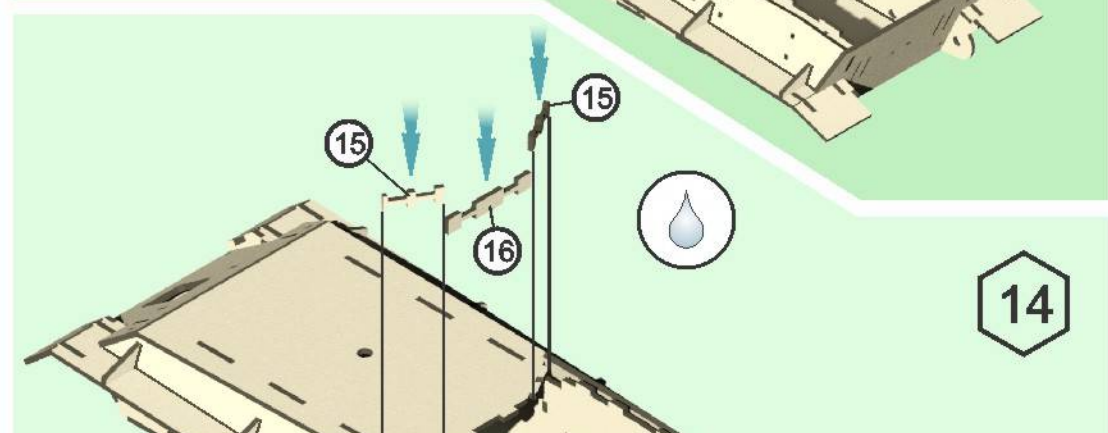
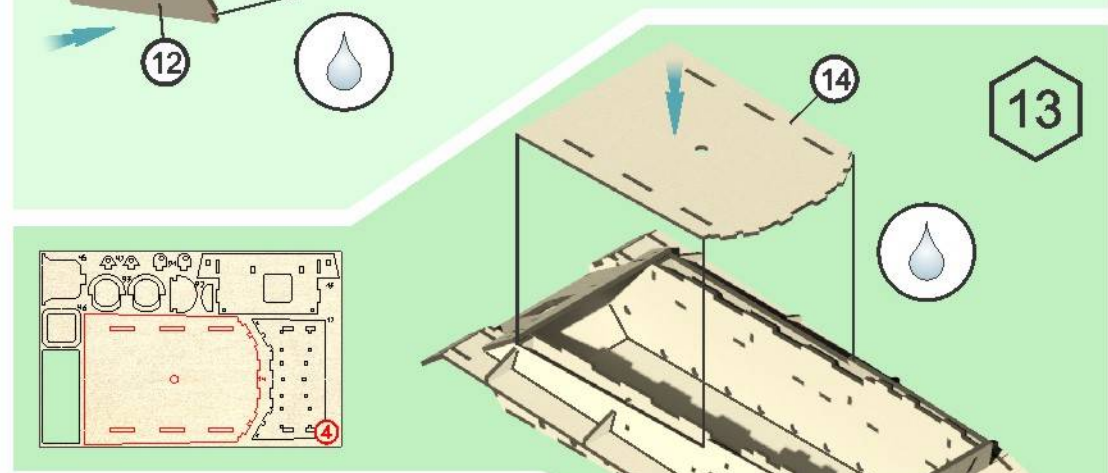
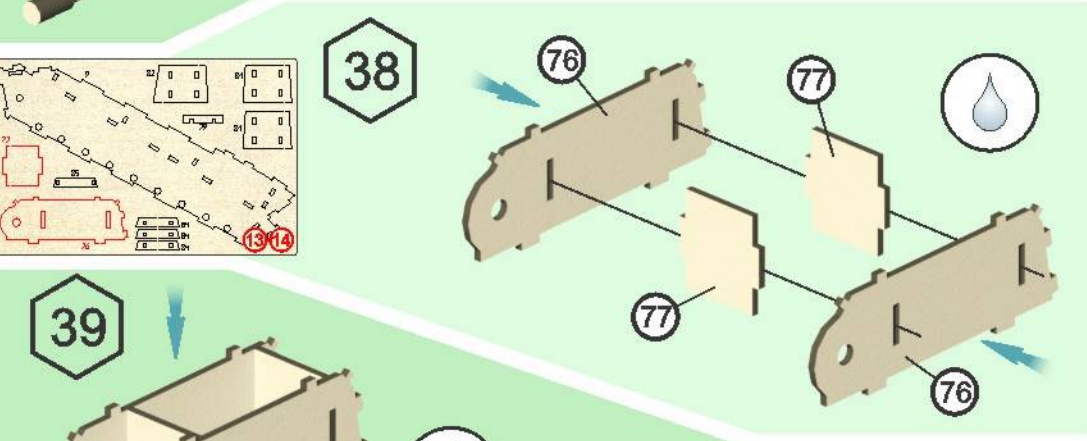
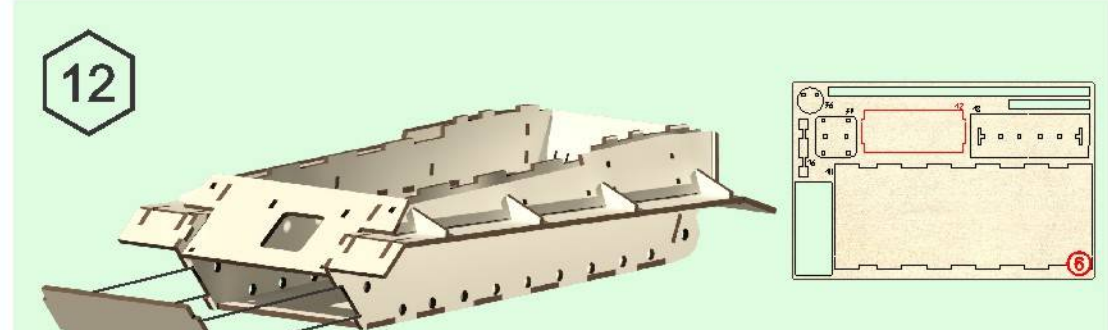
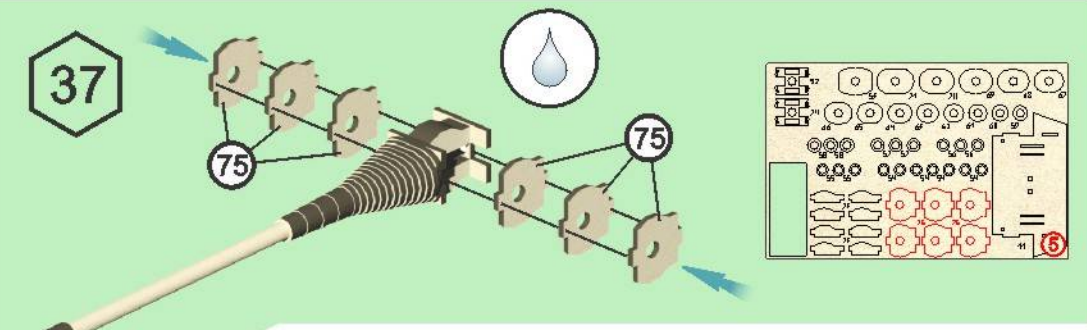


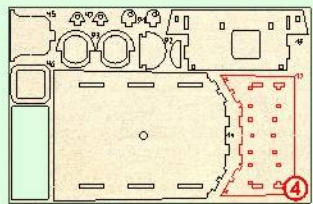
43



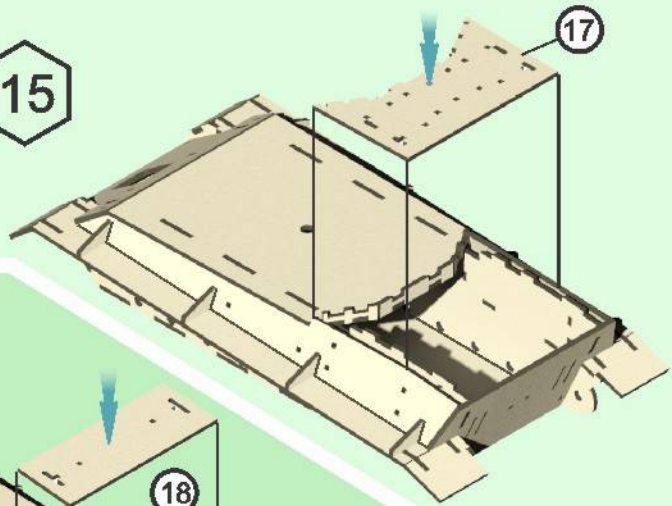
44



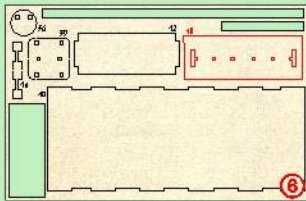
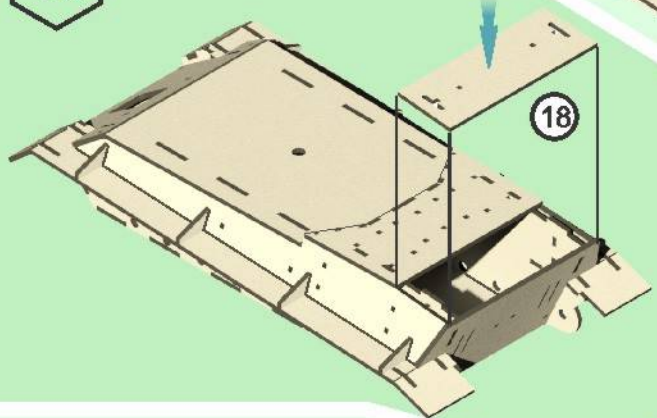




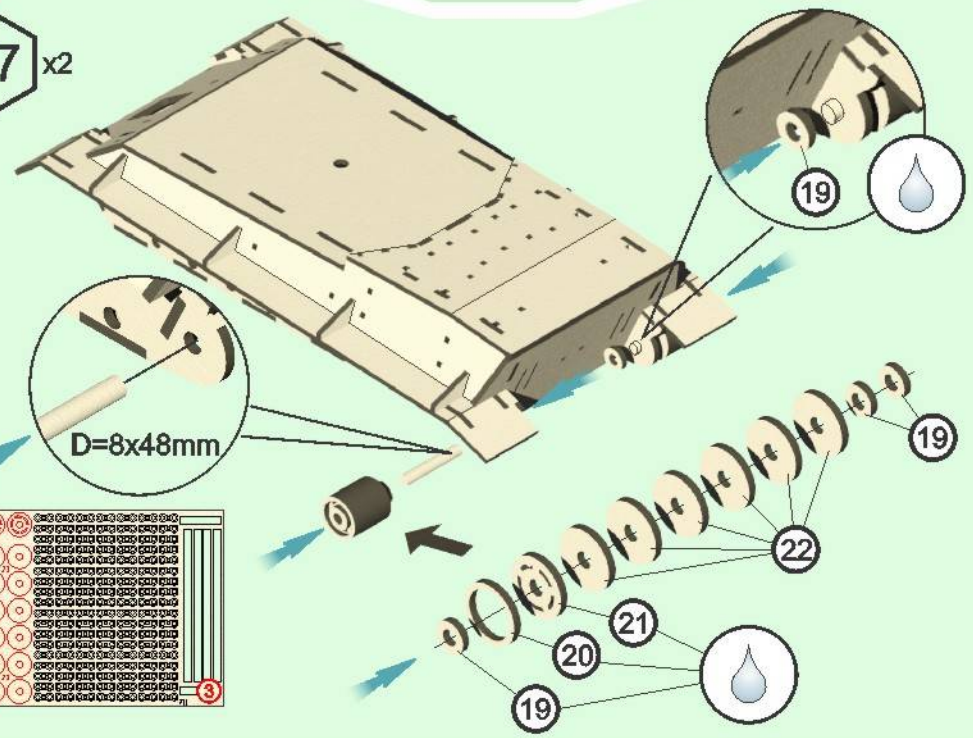
15



16

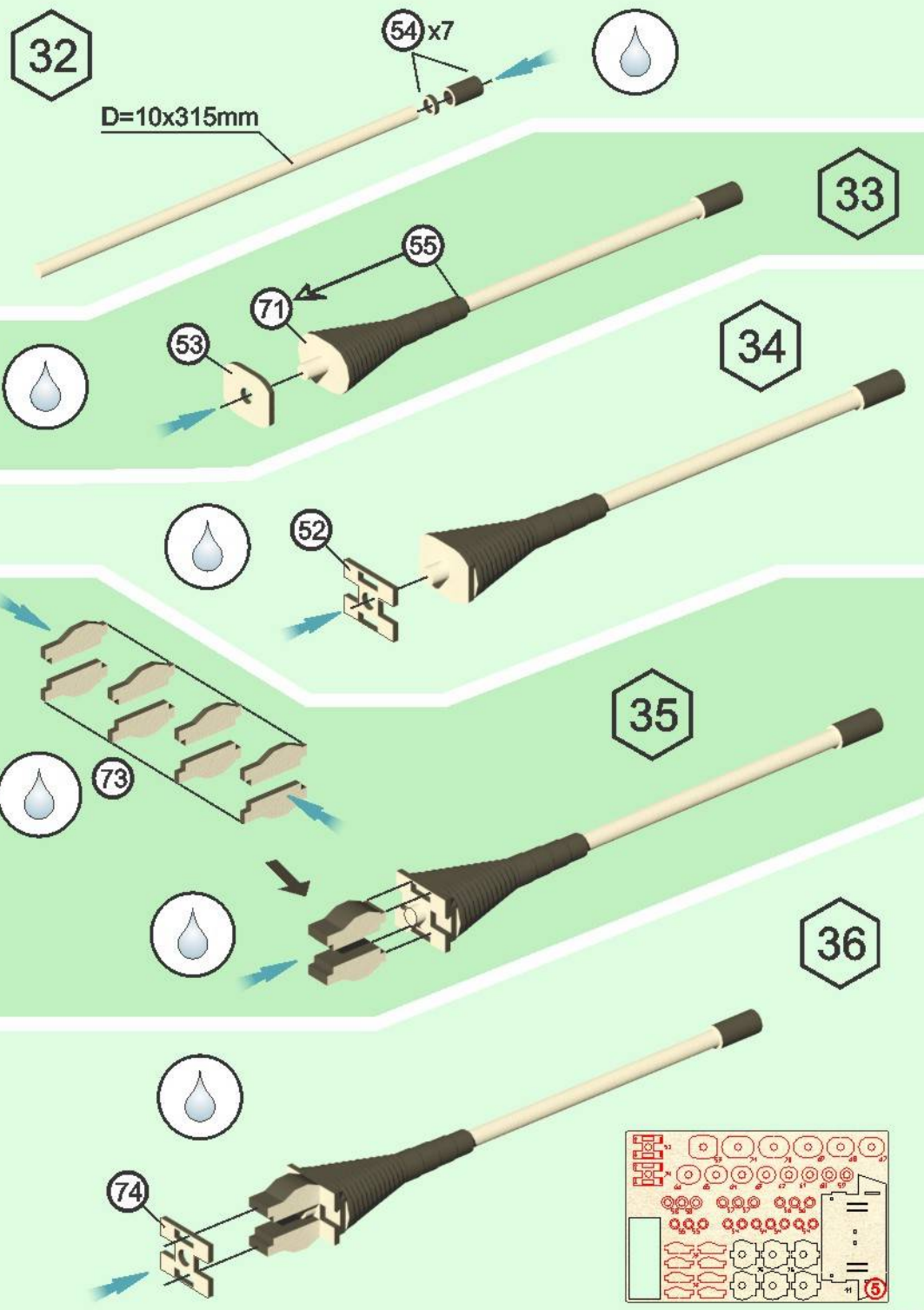


17 x2



32

D=10x315mm



54 x7

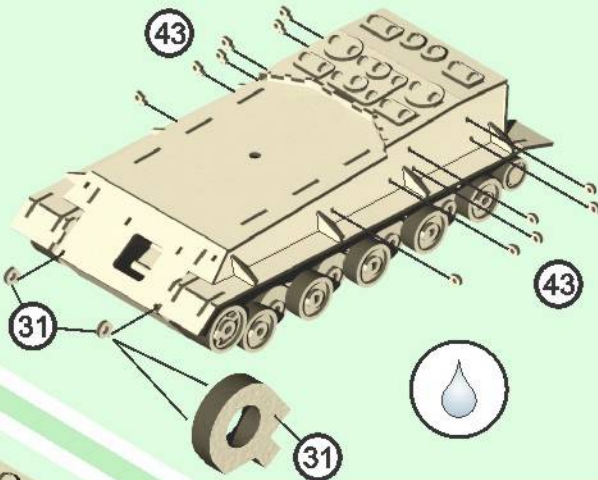
33

34

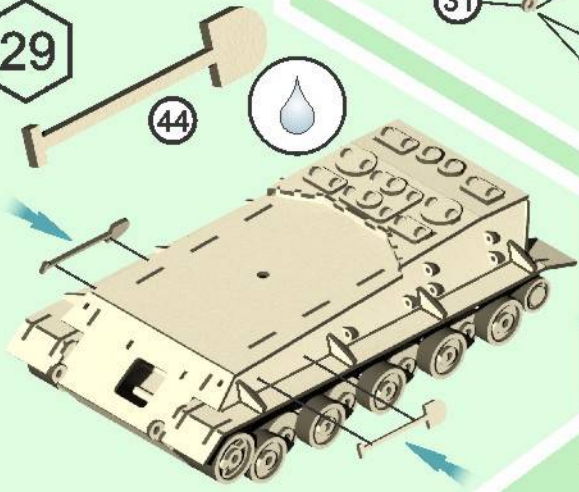
35

36

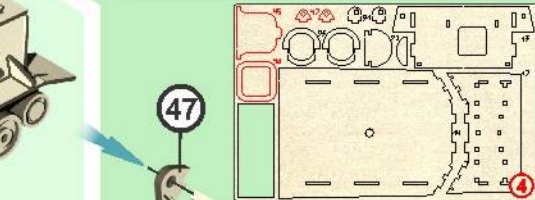
28



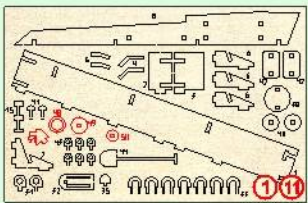
29



30

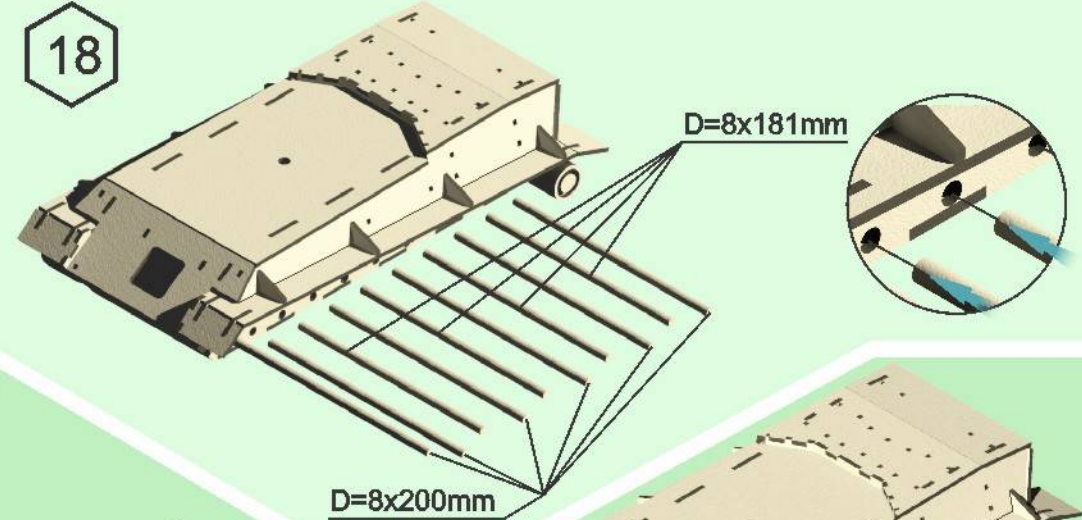
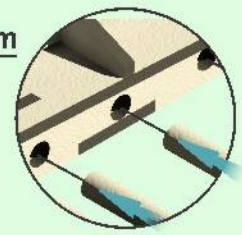


2x 31

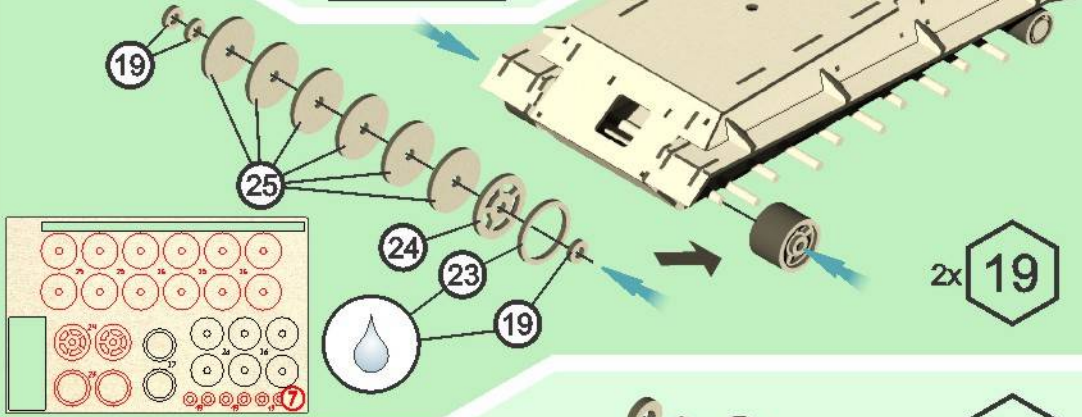


18

D=8x181mm



D=8x200mm



2x 19

8x 20

