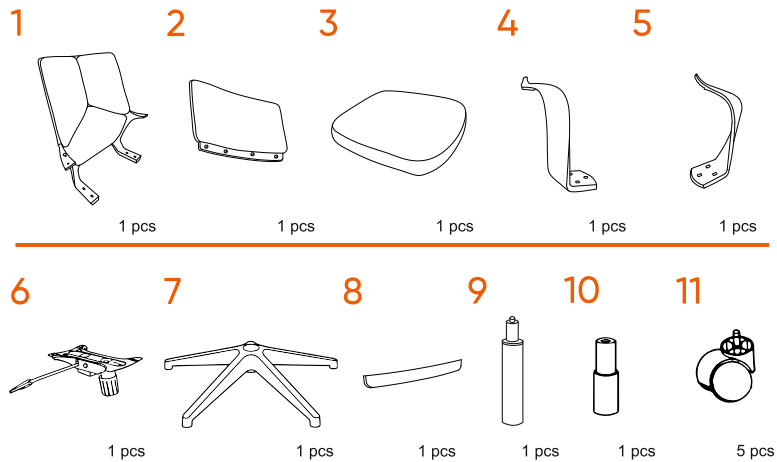


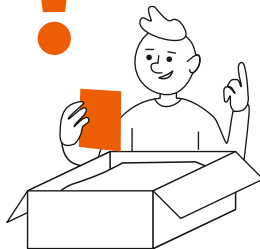
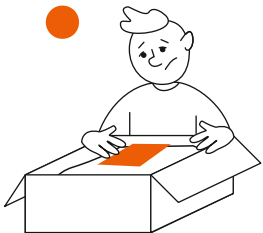
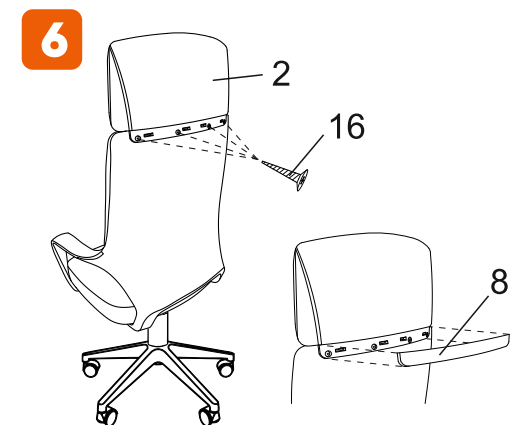
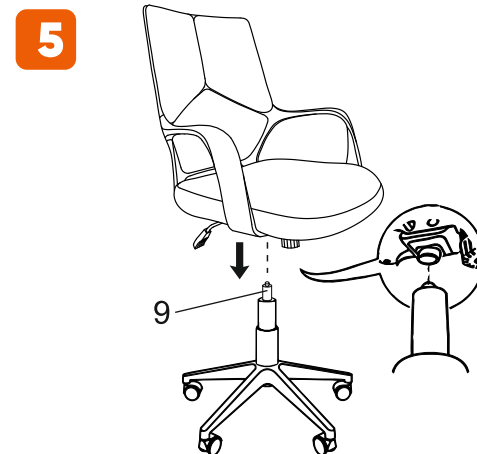
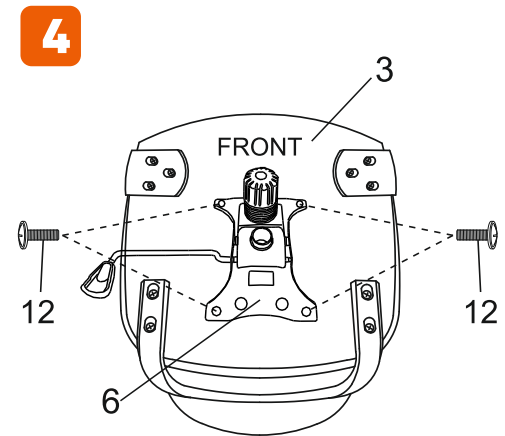
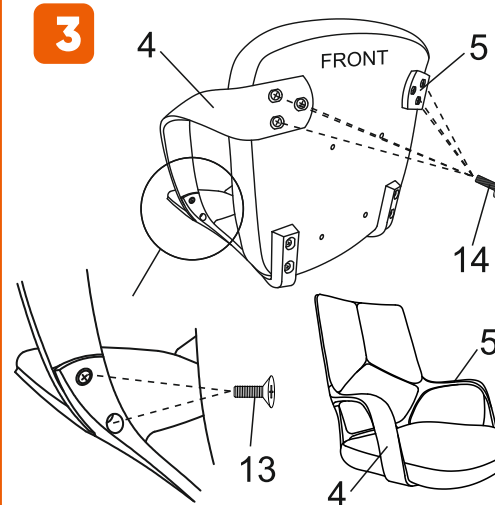
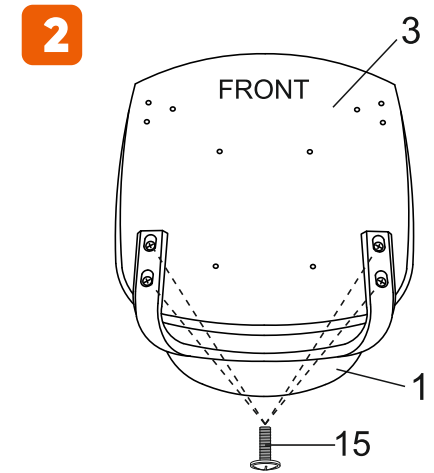
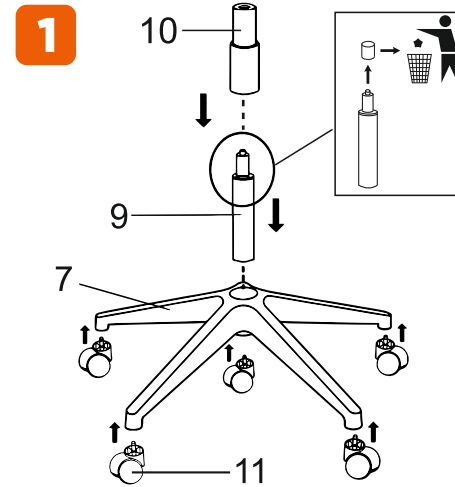


# Chairman 525

**RU** ИНСТРУКЦИЯ ПО СБОРКЕ  
**EN** ASSEMBLY INSTRUCTIONS  
**DE** AUFBAUANLEITUNG  
**FR** INSTRUCTIONS DE MONTAGE  
**IT** MANUALE D'USO  
**ES** INSTRUCCIONES DE MONTAJE  
**CS** NÁVOD K MONTÁŽI  
**KK** ЖИНАУ ЖӨНІНДЕГІ НҰСҚАУЛЫҚ



- 12** (M6x16) 4 pcs  
**13** (M6x16) 4 pcs  
**14** (M6x25) 6 pcs  
**15** (M6x30) 4 pcs  
**16** (5x20) 4 pcs



**STEP 1**  
↓  
**STEP 2**

